

Production of recombinant human acid α -glucosidase with mannosidic N-glycans in α -mannosidase I mutant rice cell suspension culture

Jae-Wan Jung

Department of Molecular Biology, Jeonbuk National University, 567 Baekje-daero, Deokjin-gu, Jeonju-si, Jeollabuk-do, 54896 Republic of Korea

Department of Biological Chemistry, John Innes Centre, Norwich Research Park, Norwich, NR4 7UH, UK

Tel.: +82-63-270-3339

Fax: +82-63-270-4334

E-mail: jwjung@jbnu.ac.kr

Abstract

High-mannose glycans, containing 6-9 mannose residues, are favorable for *in vitro* mannose phosphorylation to produce Mannose-6-phosphate (M6P) residues. These are important for lysosomal enzyme targeting and essential for uptake. Golgi α -mannosidase-I mediates mannose trimming in the N-glycosylation pathway. In this study, I used mutant rice with a T-DNA insertion in the Os04g0606400 ($\Delta\alpha$ -manI) gene to produce recombinant human acid α -glucosidase (rhGAA) for enzyme replacement therapy to treat Pompe disease. After characterization of $\Delta\alpha$ -manI mutant rice, the gene encoding rhGAA was introduced into mutant calli by *Agrobacterium*-mediated transformation. Integration of the target sequence into the rice genome was detected by genomic DNA PCR. Expression of rhGAA from $\Delta\alpha$ -manI mutant ($\Delta\alpha$ -manI-GAA) and its secretion into culture media were confirmed by western blot analysis. The N-glycosylation pattern of purified $\Delta\alpha$ -manI-GAA was analysed by MALDI-TOF mass spectrometry. This showed that the high-mannose type N-glycan with man8 (63.8%) was the most abundant form, followed by Man7 (22.5%), GnGnXF3 (6.7%), Man6 (5.4%), and Man5 (1.6%). The results suggest the successful production of rhGAA with N-glycan containing 6-8 mannose residue in the $\Delta\alpha$ -manI mutant rice cell suspension culture.

Keywords: Pompe disease, acid α -glucosidase (GAA), rice α -mannosidase I, cell suspension culture, N-glycosylation

Introduction

Pompe disease is an inherited genetic metabolism disorder and one of several lysosomal storage diseases. Deficiency of recombinant human acid α -glucosidase (rhGAA) causes accumulation of glycogen in muscle cells and varying levels of organ damage and rates of progression to death. Enzyme replacement therapy (ERT) is the current treatment and the enzyme carrying mannose-6-phosphate (M6P) on its N-glycan is taken up into target lysosome by binding to the mannose-6-phosphate receptor [1-3].

Early attempts to use rhGAA purified from *Aspergillus niger*[4] or human placenta[5] for ERT were unsuccessful, and it might be because of low enzyme dosage, disease stage, and the lack of M6P residues for uptake into muscle cells[1]. Use of rhGAA from the milk of transgenic rabbits showed improved respiratory function and restoration of some muscle function in infants [2, 6]. rhGAA from Chinese hamster ovary (CHO) cells led to the development of a drug called alglucosidase alfa (Myozyme[®]), and approved by the US Food and Drug Administration (FDA) for the treatment of infants and children with Pompe disease[1]. Uptake efficiency of rhGAA into target muscle cell is highly dependent on the number of M6P moieties and CHO cell-derived rhGAA has 1-2 N-glycans with M6P out of 7 potential N-glycosylation site. More recently, chemical conjugation of M6P onto the periodate-treated rhGAA (neoGAA) was shown to improve its uptake [7-10]. Neo-GAA showed highly improved clearance of lysosomal glycogen in the muscle of GAA knockout mice compared with the unmodified enzyme. Nevertheless, high cost of the ERT enzymes derived from CHO cells approved for treating lysosomal storage disease[11, 12] creates a cost burden for patients (approximately 500,000 USD per year for the life of the adult patient)[13].

Plant cell culture systems have many advantages over animal or bacterial cell culture, such as cost effectiveness, safety and eukaryotic protein processing [14-16]. The simplicity of the culture media, composed of simple carbon sources and hormones, can highly reduce production cost. Although differences in the glycosylation and cellular machinery have been reported [17-20], plant cells have eukaryotic protein processing and post-translational modifications which are essential for glycoprotein production and proper protein folding. Moreover, inadvertent contamination with

animal-derived pathogens can be avoided [21]. In addition, use of RAmy3D promoter and its signal peptide leads to the secretion of the target protein into rice cell culture media which aids downstream purification[22]

Natural mannose phosphorylation in plants has not been reported but recombinant α/β subunits of mammalian UDP-N-acetylglucosamine:glycoprotein N-acetylglucosamine-1-phosphotransferase (GNPTAB) and N-acetylglucosamine-1-phosphodiester α -N-acetylglucosaminidase (NAGPA) from rat liver, simple eukaryotes and humans can mediate this reaction *in vitro* [23-26]. N-glycans that have more than six mannose residues were found to be suitable substrates for this enzyme. In previous attempts to produce rhGAA from rice cell suspension culture, rhGAA was highly expressed in both wild-type and N-acetylglucosaminyltransferase-I (gntI) mutant rice cells and its α -glucosidase activity was highly similar to that of rhGAA from CHO cells [27, 28]. However, its N-glycan pattern, plant-specific or Man5 type, that are the most abundant in each line, were an unfavorable substrate for enzymatic *in vitro* phosphorylation [26].

The α -mannosidase I in ER and/or cis-Golgi apparatus conducts mannose trimming in the early stage of the N-glycosylation pathway [29]. For more detail, sequential removal of glucose residues (Glc) from initial form of N-glycan, Glc₃Man₉GlcNAc₂Asn by α -glucosidases I and II yield Man₉GlcNAc₂. The α -mannosidase I in ER remove the terminal α 1-2Man from the central arm of Man₉GlcNAc₂ and α -mannosidase I in cis-Golgi apparatus two Man residues of the Glc α 1-3Man α 1-2Man α 1-2 moiety from some of N-glycans in the cis-Golgi retain a glucose residue because of incomplete processing in the ER, thereby both generating a Man₈GlcNAc₂ isomer by using different mechanism. In Arabidopsis, inhibition of ER-type α -mannosidase I or two Golgi- α -mannosidase I blocked N-glycan maturation and resulted in Man₉ and Man₈ rather than Man₅, respectively [30]. Through phylogenetic analysis, Os04g0606400 in rice was expected to encode a putative Golgi- α -mannosidase I. In a more recent study, use of two different inhibitors of α -mannosidase I in the ER and/or cis-Golgi apparatus (kifunensine), and α -mannosidase II in the ER and/or medial-Golgi (Swainsonine) during the production of rhGAA in wild type rice successfully achieved production of rhGAA with Man₇₋₉ type of N-glycan [31]. These studies show that genetic mutation of a-

mannosidase I or pharmacological inhibition results in the production of rhGAA with Man7-9 type N-glycan.

In this study, I screened T-DNA insertional mutant rice expected to be defective in putative Golgi- α -mannosidase I genes ($\Delta\alpha$ -*manI*). This $\Delta\alpha$ -*manI* mutant rice showed highly decreased mannose trimming activity and was used for the production of rhGAA with mannosidic N-glycans.

1 **Materials and Methods**

2 **Vector construction and Agrobacteria transformation**

3 The rice expression vector pMYD85, carrying rhGAA gene, in which protein expression is
4 induced by the rice α -amylase 3D promoter under the sugar starvation conditions, was constructed
5 in previous study [27, 28]. For the purification, the signal sequence of rice α -amylase 3D (3Dsp),
6 with 8 histidine or FLAG tags and enterokinase cleavage sequence were fused to N-terminus of
7 pre-mature hGAA (57-952 a.a). In detail, 3Dsp was amplified by primer pair 3Dsp F1(XbaI): 5'-
8 TTT CTA GAA TCA GTA GTG GTT AGC -3' and GAA(8His-EK) R1: 5'-CTT GTC ATC ATC
9 GTC GTG GTG ATG GTG ATG GTG ATG GTG GTG AGC TGG GTG AGT CTC CTC CA -3'
10 for the addition of a his tag, primer pair of 3Dsp F1(XbaI) and GAA(FLAG) R1: 5'-CTT GTC
11 ATC ATC GTC CTT GTA GTC GTG AGC TGG GTG AGT CTC CTC CA-3' for FLAG tagging.
12 The partial hGAA sequence was amplified by primer pair EK-GAA F1: 5'- GAC GAT GAT GAC
13 AAG CAG CAG GGA GCC AGC AGA CCA GGG CCC CG -3' and hGAA partial (StuI) R1: 5'-
14 TTA GGC CTG TGA TAT ACT GCG AGG GCA GCG AGG -3'. These DNA fragments were
15 fused by overlapping PCR using primer pair 3Dsp F1 (XbaI) and hGAA partial (StuI) R1 and then
16 N-terminus of pMYD85 was replaced using XbaI+StuI restriction enzyme site to form pMYD532
17 and pMYD534. These vectors were transformed into Agrobacterium EHA-105 for rice
18 transformation using the helper plasmid pRK2013 by tri-parental mating method [32].

19

20 **Screening of α -mannosidase I mutant candidates**

21 T-DNA insertional mutant rice seeds of α -mannosidase I candidates for rhGAA expression were
22 obtained from RiceGE (<http://signal.salk.edu/cgi-bin/RiceGE>). Calli were produced from 16
23 individual T-DNA mutant lines consisting of nine lines for chromosome 1, single lines for
24 chromosome 2, two lines for chromosome 3, three lines for chromosome 4 and a single line for
25 chromosome 5. Cell line showing reduced intensity or no bands in western blot using rabbit anti-
26 horseradish peroxidase antibody (P7899, Sigma-Aldrich) which can recognize core α 1,3-fucose
27 and β 1,2-xylose were propagated and used for further analysis (supplementary figure 1) [33-36].

28 Genotyping PCR to confirm T-DNA insertion into the gene of Os04g0606400 by using primer
29 pairs LP (5'- TTGCAATGCCTACTGAGTGG-3') and LBP (5'- GTC GAG AAT TCA GTA CAT
30 T-3'), or RP (5'- CTCTCGGGAGTTCTCACTGG-3') and RBP (5'-TTG GGG TTT CTA CAG
31 GAC GTA AC-3') were conducted under the following PCR conditions: 1 cycle at 94 °C for 5
32 min; 30 cycles at 94 °C for 30 s, 55 °C for 30 s, and 72 °C for 45 s, followed by 1 cycle at 72 °C
33 for 5 min. Homozygous T-DNA insertion was negatively identified by PCR using primer pair LP
34 and RP under same condition (Figure 1A-B). Cell line shows no band which means homozygous
35 T-DNA insertion was selected and used for further analysis.

36 Again, protein extracts from wild type, *gntI* mutant (SAI2G12, [http://signal.salk.edu/cgi-](http://signal.salk.edu/cgi-bin/RiceGE)
37 [bin/RiceGE](http://signal.salk.edu/cgi-bin/RiceGE)) [27] and homozygous T-DNA insertional mutant rice above were loaded to 10% (w/v)
38 SDS-polyacrylamide gel and separated by electrophoresis. The protein bands were visualized by
39 Coomassie brilliant blue. For western blot, proteins were transferred to Nitrocellulose membrane
40 (Hybond-C, GE healthcare) in transfer buffer (50 mM Tris, 40 mM glycine, and 20% methanol)
41 using a Trans-Blot® SD Semi-Dry Transfer Cell (Bio-Rad) at 25 V for 30 min. Membranes were
42 blocked with 10% (w/v) skim milk in Tris-Buffered Saline with Tween-20 on a rotary shaker
43 overnight. α 1,3-fucose and β 1,2-xylose were detected by 1:5000 dilution of primary antibodies of
44 α 1,3-fucose (Agrisera), β 1,2-xylose (Agrisera, Sweden), followed by 1/7000 dilution of anti-rabbit
45 IgG alkaline phosphatase conjugate (Sigma-Aldrich) as secondary antibody. And Lewis a epitope
46 was detected by 1:200 dilution of JIM84 antibody[37], followed by 1/7000 dilution of anti-rat IgG
47 alkaline phosphatase conjugate (Sigma-Aldrich). Color was developed using BCIP/NBT
48 (Millipore). Reaction was stopped within 1 min by washing the membrane with distilled water.

49

50 **Callus induction and rice transformation**

51 Rice seeds were dehusked and washed several times with 70% (v/v) ethanol, 2% (v/v) NaOCl
52 and autoclaved distilled water, respectively. The sterilized seeds were germinated for one week on
53 callus induction agar plate (N6 plates) containing 4 g/L of CHU salts, 30 g/L of sucrose, 2 mg/L of
54 2,4-D, 0.2 mg/L of kinetin, and 4 g/L phytigel with 50mg/L hygromycin B as selection marker.

55 Generated calli were isolated, propagated and used for western blot or genotyping PCR for
56 screening of $\Delta\alpha$ -*manI* mutants. Putative $\Delta\alpha$ -*manI* mutant rice calli were further propagated and
57 used for *A.tumefaciens*-mediated transformation with pMYD85, pMYD532 and pMYD534,
58 respectively. Infected calli were cultured on N6 plates without antibiotics for 3 days in dark
59 condition and washed with distilled water containing 500 mg/L of Cefotaxime and transferred to
60 selection media (N6 plates supplemented with DL-phosphinothricin (PPT; 4.4 ppm)) After 3-4
61 weeks, transgenic calli that survived were moved onto new selection media and propagated.

62

63 **Genomic DNA extraction and PCR**

64 To confirm hGAA gene integration into the genome of $\Delta\alpha$ -*manI* mutant rice, genomic DNA
65 PCR was conducted after extraction of genomic DNA using a Zymobead genomic DNA kit (Zymo
66 Research). Primer pair amplifying hGAA and His-hGAA (GAA gD F1: 5'- GTT CCC CGA GAG
67 CTG AGT GG-3' and GAA gD R1: 5'-GGT AGA AAG GGT GAG ACC CG -3') was used for
68 PCR reaction. Thermal cycling was performed for 30 cycles, consisting of 1 min at 94°C, 1 min at
69 55°C, and 3 min at 72°C. The PCR products were electrophoresed on a 1.0% (w/v) agarose gel,
70 visualized by staining with ethidium bromide, and observed under UV light.

71

72 **Rice cell suspension culture and induction of protein expression**

73 $\Delta\alpha$ -*manI* rice mutant and $\Delta\alpha$ -*manI* transformed with individual pMYD85 (D85), pMYD532
74 (D532) and pMYD534 (D534) were cultured in 50 mL N6 medium containing 2 mg/L 2,4-D, 0.02
75 mg/L kinetin, 3% (w/v) sucrose, and 50 mg/L hygromycin B in 300 mL flask at 28 °C in the dark
76 using a rotary shaker with a rotation speed of 100 rpm. 10 mL of $\Delta\alpha$ -*manI* rice mutant cells,
77 transferred every 3-4 days and spent media were collected and kept in -70 °C for further analysis.

78 To induce target gene expression under control of the Ramy3D promoter, 5 g of fresh cells
79 collected by aspiration, washed with distilled water and inoculated into 50 mL fresh N6 (CHU)
80 medium without sucrose. At 9 days after sugar starvation, spent media was harvested and store in -

81 70 °C for further analysis. The rhGAA expression levels of each cell line were measured by
82 comparing band intensity with that of positive control on SDS-PAGE gel using Image J software.

83

84 **Purification of rhGAA**

85 rhGAA secreted from D532 was purified using 1 mL Ni-NTA agarose resin (Qiagen) according
86 to the manufacturer's instructions and as described previously [27] with slight modification.
87 Briefly, 0.45 µm filtered 50 mL of culture media produced under sugar starvation conditions was
88 loaded. The unbound protein was washed with 10 mL of 1X Phosphate-buffered Saline (PBS), pH
89 7.0, and the bound protein was eluted with 1 mL of PBS (pH 4.3) [27] and neutralized using 25 µL
90 of 1 M Tris-HCl, pH 8.0.

91 rhGAA secreted from D534 was also purified using 1 mL of M2 anti-FLAG affinity column
92 (GE healthcare) according to the manufacturer's instruction. 30 mL of culture media under sugar
93 starvation was loaded to prepared resin and flow-through was collected every 10 mL. The resin
94 was washed with 5 column volumes of TBS (50 mM Tris HCl, with 150 mM NaCl, pH 7.4) to
95 remove unbound protein, and followed by elution using 1 mL aliquots of 0.1 M glycine-HCl, pH
96 3.5, into vials containing 25 µL of 1 M Tris-HCl, pH 8.0.

97

98 **SDS-PAGE and western blot**

99 To detect rhGAA in the samples, SDS-PAGE and western blotting were used. 30 µL of each
100 samples were loaded to 10% (w/v) SDS-polyacrylamide gel and separated by electrophoresis. The
101 protein bands were visualized by Coomassie brilliant blue. For western blot, proteins were
102 transferred to Nitrocellulose membrane (Hybond-C, GE healthcare) in transfer buffer using a
103 Trans-Blot® SD Semi-Dry Transfer Cell (Bio-Rad) at 25 V for 30 min. Membranes were blocked
104 with 10% (w/v) skim milk in Tris-Buffered Saline with Tween-20 on a rotary shaker overnight.
105 Target protein was detected by 1/2000 dilution of rat anti-GAA polyserum [27], followed by
106 1/7000 dilution of anti-rat IgG alkaline phosphatase conjugate (Sigma-Aldrich) as secondary

107 antibody. Colour was developed using BCIP/NBT (Millipore). Reaction was stopped within 5 min
108 by washing the membrane with distilled water.

109

110 **MALDI-TOF**

111 The collected media from $\Delta\alpha$ -*manI* was centrifuged at 15,000g for 30 min at 4 °C. The
112 supernatant was lyophilized to reduce the volume and dialyzed in the distilled water. After
113 filtration by 0.45 µm filter, it was applied to a Con A-Sepharose 4 B column (GE Healthcare), and
114 glycoproteins were eluted with 0.5 M α-D-methylglucoside. This sample and purified $\Delta\alpha$ -*manI*-
115 GAA (D532) prepared above were lyophilized, each sample (2 mg) was digested with 50 µg
116 trypsin (T0303; Sigma-Aldrich) and chymotrypsin (C4129; Sigma-Aldrich) at 37 °C for 16 h and
117 boiled for 10 min for inactivation of enzyme. N-glycans were released by incubation with 1.0 mU
118 PNGase A (Roche Diagnostics) in 60 µL 0.5 M citrate/phosphate buffer at pH 4.0 for 16 h and
119 purified using a Carbohydrate Ultra Clean column (Alltech) as described previously [38].
120 Pyridylamination of N-glycans was performed using a pyridylamination manual kit (Takara Bio
121 Inc.) according to the manufacturer's instructions. For further purification of the 2-aminopyridine
122 (PA)-N-glycans, NP-high performance liquid chromatography (HPLC) was performed using an
123 TSK gel Amide-80 column (4.6× 250 mm; Tosoh Co.) and a Waters 2690 Alliance HPLC
124 separation module (Waters Co.) equipped with the 474 Fluorescence Detector (Waters Co.), as
125 described previously [39]. Fluorometric detection was carried out at excitation and emission
126 wavelengths of 310 and 380 nm, respectively. The molecular masses of PA-N-glycans were
127 determined using the 4800 Plus matrix-assisted laser desorption ionization time-of-flight/time-of-
128 flight (MALDI-TOF/TOF) analyzer (Applied Biosystems). The PA-glycans purified from the
129 pooled NP-HPLC fractions (75–130 min) were subjected to MALDI-TOF/MS analysis as
130 described previously [40]. The mass spectra were collected in the reflector positive ion mode using
131 2,5-dihydroxybenzoic acid (10 mg/mL in 50% acetonitrile/0.1% trifluoroacetic acid and 10 mM
132 NaCl) as a matrix. Purified PA-N-glycans were mixed with an equal volume of matrix solution,
133 and 2 µL of the mixture were placed on the target plate and air-dried [41]. An m/z range of 1000–

134 2400 was measured and analysed using DATA Explore software (Applied Biosystems). Peaks
135 were assigned according to the calculated molecular masses [M+Na⁺] of PA-N-glycans, and
136 mannose, galactose, fucose, xylose, and N-acetylglucosamine residues were identified. N-glycan
137 structures were assigned by comparison with the plant N-glycans identified to date using
138 SimGlycan version 2.8 (PREMIER Biosoft Int.). Relative abundances were calculated based on
139 the areas of the corresponding peaks in the mass spectra, as described previously [42].
140

141 **Results**

142 **Identification of $\Delta\alpha$ -*manI* mutant**

143 To select the appropriate $\Delta\alpha$ -*manI* mutant rice line for expression of rhGAA with high mannose
144 N-glycans, α -mannosidase I in rice known to be localized in the ER or Golgi and containing the
145 glycosyl hydrolase family 47 domain which catalyse mannose trimming reaction were searched
146 from protein database (<https://www.uniprot.org/>) and rice seeds have T-DNA insertion on those
147 position were purchased through RiceGE: Rice Functional Genomic Express Database
148 (<http://signal.salk.edu/cgi-bin/RiceGE>) from Kyung Hee University, Republic of Korea and
149 Huazhong Agricultural University, China (supplementary table 1.)[30]. Calli were induced from
150 the mutant rice seeds have T-DNA insertions on five different putative α -mannosidase I gene in
151 rice genome, respectively. Protein extracts from these putative rice calli lines were analysed by
152 western blot using anti-HRP antibody for screening of mutant lacking α 1,3-fucose and β 1,2-xylose
153 which reflect the blockage of N-glycan maturation. Rice mutant possessing T-DNA insertions in
154 Os04g0606400 (LOC_Os04g51690, PFG-3A-12868) showed highly reduced bands correspond to
155 α 1,3-fucose and β 1,2-xylose was used for further analysis (supplementary figure 1.). Homozygous
156 and heterozygous T-DNA insertional pattern were observed from two individual $\Delta\alpha$ -*manI* mutants
157 by genotyping PCR using LP, RP, LBP and RBP (Fig.1A and 1B). #1 and #2 those are individual
158 rice mutant of Os04g0606400 showed band from PCR using primer pair LP and LBP, or RP and
159 RBP which means T-DNA insertion on expected position of rice genome. Homozygous T-DNA
160 insertion was confirmed by PCR using primer pair LP and RP targeting rice genome flanking T-
161 DNA insertion site. Homozygote (#1) shows no band because of its large length of T-DNA (~8 kb)
162 while wild type and heterozygote (#2) show amplicon. Amplified DNA fragments from #1 were
163 extracted from Agarose gel and analysed by DNA sequencing (data not shown), revealing T-DNA
164 insertion into the intron between the 11th and 12th exon as expected. The growth rate of this
165 homozygous $\Delta\alpha$ -*manI* mutant rice callus was similar to that of the wild type without any severe
166 defects even under sugar starvation. For further analysis, western blot using anti- α 1,3-fucose, anti-
167 β 1,2-xylose and JIM84 antibody showed highly reduced band intensity, respectively (Fig. 1C).

168 This demonstrates that the $\Delta\alpha\text{-manI}$ mutation inhibits N-glycan maturation such as attachment of
169 plant N-glycan species, α 1,3-fucose, β 1,2-xylose, β 1,3-galactose and α 1,4-fucose in rice.

170

171 **Expression and purification of $\Delta\alpha\text{-manI}$ -GAA**

172 Calli were transformed with Agrobacteria containing the vectors pMYD85 (rhGAA without tag),
173 pMYD532 (8His+EK+rhGAA) or pMYD534 (FLAG-EK-rhGAA) were screened by genomic
174 DNA PCR. Eight or more cell lines from each construct were chosen for propagation and induced
175 to express rhGAA under sugar starvation conditions. D85#7, D532#3 and D534#16 transformed
176 with individual pMYD85, pMYD532 and pMYD534 showed the highest expression of premature
177 form $\Delta\alpha\text{-manI}$ -GAA (~110 kDa) at the 9 days after sugar starvation on SDS-PAGE and Western
178 blot, respectively (Fig. 2). The rhGAA expression levels of each pMYD85#7, pMYD532#3 and
179 pMYD534#16 cell line were approximately 10 mg/L, 21mg/L and 12 mg/L by comparing band
180 intensity with positive control on SDS-PAGE.

181 In the case of D532 and D534, expressed rhGAA was purified by affinity chromatography using
182 the eight histidine residues or FLAG tag on N-terminus (Fig. 3). Histidine tagged $\Delta\alpha\text{-manI}$ -GAA
183 could be purified successfully with protocol used for purification of rhGAA with histidine tag on
184 C-terminus in previous studies [27, 28]. N-terminal FLAG tagged $\Delta\alpha\text{-manI}$ -GAA also could be
185 highly purified using anti-FLAG resin but showed lower binding capacity. Impurities on SDS-
186 PAGE and Western blot might be matured form of rhGAA by acidic condition during purification
187 or host cell protein unspecifically bound. Hence, Histidine tagged $\Delta\alpha\text{-manI}$ -GAA was used for
188 further analysis.

189

190 **N-glycan profiling**

191 N-glycan patterns of glycoproteins in culture media of $\Delta\alpha\text{-manI}$ mutant and purified $\Delta\alpha\text{-manI}$ -
192 GAA were analysed and compared to that of wild-type rice (Fig.4 and table.1). N-glycans from
193 $\Delta\alpha\text{-manI}$ mutant and $\Delta\alpha\text{-manI}$ -GAA were almost all high mannose type of N-glycans while wild
194 type cell lines shows typical pattern of plant N-glycan contents. Interestingly, the most abundant

195 N-glycan from $\Delta\alpha\text{-manI}$ was Man7 (48.9%), followed by Man8 (33.3%), Man6 (7.0%) while that
196 of $\Delta\alpha\text{-manI-GAA}$ was Man8 (63.8%), Man7 (22.5%) and Man6 (5.4%). This difference may be
197 because various host glycoproteins were present in the culture media of the $\Delta\alpha\text{-manI}$ mutant while
198 $\Delta\alpha\text{-manI-GAA}$ was specifically purified. Most importantly, N-glycan patterns in both $\Delta\alpha\text{-manI}$
199 and $\Delta\alpha\text{-manI-GAA}$ reflect that gene disruption of Os04g0606400 highly inhibited N-glycan
200 maturation in rice.

201

202 **Discussion**

203 In this study, I suggest a major role for Os04g0606400 in the early stage of plant N-glycan
204 maturation and the successful expression of $\Delta\alpha\text{-manI-GAA}$. The main N-glycans on this $\Delta\alpha\text{-manI-GAA}$
205 GAA was Man8 which is known as suitable substrate for *in vitro* phosphorylation. Because the
206 production of $\Delta\alpha\text{-manI-GAA}$ in our study does not require any inhibitor treatment, it can greatly
207 reduce production costs and the cost burden for Pompe patients [31]. Although I used rhGAA in
208 this study, other lysosomal enzymes that require M6P such as α -L-iduronidase[24], α -galactosidase
209 A [43] can be produced using same strategy.

210 In screening of $\Delta\alpha\text{-manI}$ mutant candidates, only the cell lines that have T-DNA insertions in
211 Os04g0606400 showed highly decreased amounts of plant-specific N-glycans on western blot.
212 However, it does not suggest that Os04g0606400 encodes the only enzyme that conducts N-glycan
213 mannose trimming out of six candidates. Although other cell extracts showed bands corresponding
214 plant specific N-glycans, genotyping PCR of all individual candidates was not conducted in this
215 study. Furthermore, the seeds that I obtained from the library could be a mix of wild type, hetero-
216 and homozygous mutant lines. In this study, I focused on screening for cell lines suitable for the
217 production of rhGAA carrying more than six mannose residues on its N-glycan. Hence, I analysed
218 only the Os04g0606400 mutant in detail and used it as the rhGAA expression host.

219 Because *gntI* mutant rice was unable to grow or regenerate in previous studies [27, 44], and $\Delta\alpha$ -
220 *manI* is located upstream of *gntI* in N-glycosylation pathway, I hypothesized possible lethality of
221 the $\Delta\alpha\text{-manI}$ knock-out mutant. Despite more than three attempts at plant regeneration from calli,

222 no regenerated plant of the Os04g0606400 mutant were obtained while wild type callus were
223 regenerated successfully (data not shown). I assume this mutation may causes a problem with plant
224 regeneration and cell differentiation [44].

225 Both $\Delta\alpha$ -*manI*-GAA tagged with Histidine and FLAG on N-terminus were successfully
226 expressed and purified from transgenic $\Delta\alpha$ -*manI* mutant rice. Although FLAG tag showed low
227 binding to the affinity column, this can be improved by increasing volume of column. Furthermore,
228 these tags would be be cleaved by enterokinase treatment while or after purification. By adding an
229 enterokinase cleavage site between N-terminus tag and target protein, the heterogeneity of N-
230 terminus, which can be made different signal peptide cleavage in plants and animals, would
231 probably be improved.

232 Enzymatic activity was not measured in this study but rhGAA with 7-9 mannose residues
233 produced from rice cell suspension culture under presence of mannosidase inhibitor showed
234 similar *in vitro* enzymatic activity to that of CHO cell derived rhGAA in previous study [31].
235 Although this strategy blocks α -mannosidase I function at the protein level while $\Delta\alpha$ -*manI* acts at
236 the DNA level, both approaches target α -mannosidase I so it seems likely that $\Delta\alpha$ -*manI*-GAA
237 would probably have similar enzyme activity.

238 In N-glycan profiling, suitable N-glycan substrates for enzymatic *in vitro* phosphorylation,
239 Man8, Man7, and Man6 were detected from rhGAA produced from $\Delta\alpha$ -*manI* mutant rice.
240 Interestingly, although N-glycan maturation is highly inhibited in this cell line, mannose trimming
241 is not completely terminated with Man8 and processed further. Moreover, plant specific N-glycan
242 species, GnGnXF3 (6.7% from $\Delta\alpha$ -*manI*-GAA, 2.9% from $\Delta\alpha$ -*manI*), GnMXF3 (1.9% from $\Delta\alpha$ -
243 *manI*) and MMXF3 (4.0% from $\Delta\alpha$ -*manI*) were still detected. The reason of the presence of these
244 unexpected N-glycans may be a result of insufficient knock-out by T-DNA insertion on intron or
245 minor activity of α -mannosidase I isotype. This could be further characterized by using knock-out
246 using other technique such as CRISPR/Cas9 in further studies. Nevertheless, it is clear that
247 Os04g0606400 plays a major role in mannose trimming in N-glycosylation pathway in rice, and
248 rhGAA expressed from this mutant mainly carried Man6-8 that are known as the most favorable

249 substrates of *in vitro* phosphorylation using two enzyme, GNPTAB and NAGPA [45]. Although *in*
250 *vitro* phosphorylation of Man6-8 on $\Delta\alpha$ -*manI*-GAA was not tested in this study, studies involving
251 *in vitro* phosphorylation of Man6-9 on the other recombinant lysosomal enzymes for ERT and the
252 presence of Man6-8 on $\Delta\alpha$ -*manI*-GAA suggest that $\Delta\alpha$ -*manI*-GAA would also probably be
253 phosphorylated via similar approaches [23, 24].

254 Therefore, this study provides knowledge about the early stage of N-glycosylation in plants and
255 the production of rhGAA in $\Delta\alpha$ -*manI* mutant rice. I expect that $\Delta\alpha$ -*manI* mutant rice can be used
256 for attractive expression host for production of lysosomal enzymes for ERT with cost effectiveness
257 and safety.

258

259 **Acknowledgements**

260 I acknowledge George P. Lomonosoff for English editing and supporting.

261 This research was supported by the Agriculture, Food and Rural Affairs Research Center Support
262 Program of Ministry of Agriculture, Food and Rural Affairs (714001-7); Basic Science Research
263 Program through the National Research Foundation of Korea (NRF) funded by the Ministry of
264 Education (NRF-2018R1A6A3A01011033, NRF-2021R1A6A3A03038622); John Innes Centre,
265 Knowledge Exchange and Commercialisation Innovation Funding (01IF 2020 GL01).

266 **Reference**

- 267 1. McVie-Wylie AJ, Lee KL, Qiu H, Jin X, Do H, Gotschall R, et al. Biochemical
268 and pharmacological characterization of different recombinant acid alpha-glucosidase
269 preparations evaluated for the treatment of Pompe disease. *Mol Genet Metab.*
270 2008;94(4):448-55. doi: 10.1016/j.ymgme.2008.04.009. PubMed PMID:
271 WOS:000257935000011.
- 272 2. Van den Hout JMP, Kamphoven JHJ, Winkel LPF, Arts WFM, De Klerk JBC,
273 Loonen MCB, et al. Long term intravenous treatment of Pompe disease with recombinant
274 human alpha-glucosidase from milk. *Pediatrics.* 2004;113(5):E448-E57. doi: DOI
275 10.1542/peds.113.5.e448. PubMed PMID: WOS:000221169200064.
- 276 3. Yang HW, Kikuchi T, Hagiwara Y, Mizutani M, Chen YT, Van Hove JLK.
277 Recombinant human acid alpha-glucosidase corrects acid alpha-glucosidase-deficient
278 human fibroblasts, quail fibroblasts, and quail myoblasts. *Pediatr Res.* 1998;43(3):374-80.
279 doi: Doi 10.1203/00006450-199803000-00011. PubMed PMID: WOS:000072139600011.
- 280 4. Lauer RM, Mascarini T, Racela AS, Diehl AM, Brown BI. Administration of a
281 Mixture of Fungal Glucosidases to a Patient with Type 2 Glycogenosis (Pompe Disease).
282 *Pediatrics.* 1968;42(4):672-&. PubMed PMID: WOS:A1968C054900013.
- 283 5. Martin JJ, Barys TD, Vanhoof F, Palladini G. Pompe Disease - Inborn
284 Lysosomal Disorder with Storage of Glycogen - Study of Brain and Striated-Muscle. *Acta*
285 *Neuropathol.* 1973;23(3):229-44. doi: Doi 10.1007/Bf00687878. PubMed PMID:
286 WOS:A1973O856800004.
- 287 6. Van den Hout H, Reuser AJJ, Vulto AG, Loonen MCB, Cromme-Dijkhuis A, Van
288 der Ploeg AT. Recombinant human alpha-glucosidase from rabbit milk in Pompe patients.
289 *Lancet.* 2000;356(9227):397-8. doi: Doi 10.1016/S0140-6736(00)02533-2. PubMed
290 PMID: WOS:000088486000014.
- 291 7. Zhu YX, Li XM, Kyazike J, Zhou Q, Thurberg BL, Raben N, et al. Conjugation
292 of mannose 6-phosphate-containing oligosaccharides to acid alpha-glucosidase improves
293 the clearance of glycogen in Pompe mice. *Journal of Biological Chemistry.*
294 2004;279(48):50336-41. doi: 10.1074/jbc.M409676200. PubMed PMID:
295 WOS:000225229500097.
- 296 8. Zhu Y, Li X, McVie-Wylie A, Jiang C, Thurberg BL, Raben N, et al.
297 Carbohydrate-remodeled acid alpha-glucosidase with higher affinity for the cation-
298 independent mannose 6-phosphate receptor demonstrates improved delivery to muscles of
299 Pompe mice. *Neuromuscular Disord.* 2005;15(9-10):712-3. PubMed PMID:
300 WOS:000232221900151.
- 301 9. Zhu Y, Jiang JL, Gumlaw NK, Zhang J, Bercury SD, Ziegler RJ, et al.
302 Glycoengineered acid alpha-glucosidase with improved efficacy at correcting the
303 metabolic aberrations and motor function deficits in a mouse model of Pompe disease.
304 *Mol Ther.* 2009;17(6):954-63. Epub 2009/03/12. doi: 10.1038/mt.2009.37. PubMed
305 PMID: 19277015; PubMed Central PMCID: PMC2835178.
- 306 10. Zhou Q, Stefano JE, Harrahy J, Finn P, Avila L, Kyazike J, et al. Strategies for
307 Neoglycan Conjugation to Human Acid alpha-Glucosidase. *Bioconjugate Chem.*
308 2011;22(4):741-51. doi: 10.1021/bc1005416. PubMed PMID: WOS:000289613400026.
- 309 11. Gomord V, Faye L. Posttranslational modification of therapeutic proteins in
310 plants. *Curr Opin Plant Biol.* 2004;7(2):171-81. doi: 10.1016/j.pbi.2004.01.015. PubMed
311 PMID: WOS:000220484100013.
- 312 12. Grabowski GA, Golembo M, Shaaltiel Y. Taliglucerase alfa: An enzyme
313 replacement therapy using plant cell expression technology. *Mol Genet Metab.*

- 314 2014;112(1):1-8. doi: 10.1016/j.ymgme.2014.02.011. PubMed PMID:
315 WOS:000335539700001.
- 316 13. Fuller DD, ElMallah MK, Smith BK, Corti M, Lawson LA, Falk DJ, et al. The
317 respiratory neuromuscular system in Pompe disease. *Respir Physiol Neurobiol.*
318 2013;189(2):241-9. Epub 2013/06/26. doi: 10.1016/j.resp.2013.06.007. PubMed PMID:
319 23797185; PubMed Central PMCID: PMC4083814.
- 320 14. Lallemand J, Bouche F, Desiron C, Stautemas J, Esteves FD, Perilleux C, et al.
321 Extracellular peptidase hunting for improvement of protein production in plant cells and
322 roots. *Front Plant Sci.* 2015;6. doi: ARTN 37
323 10.3389/fpls.2015.00037. PubMed PMID: WOS:000349206800001.
- 324 15. Ma JKC, Drake PMW, Christou P. The production of recombinant pharmaceutical
325 proteins in plants. *Nat Rev Genet.* 2003;4(10):794-805. doi: 10.1038/nrg1177. PubMed
326 PMID: WOS:000185701800015.
- 327 16. Twyman RM, Stoger E, Schillberg S, Christou P, Fischer R. Molecular farming in
328 plants: host systems and expression technology. *Trends Biotechnol.* 2003;21(12):570-8.
329 Epub 2003/11/20. doi: 10.1016/j.tibtech.2003.10.002. PubMed PMID: 14624867.
- 330 17. Wilbers RHP, Westerhof LB, van Raaij DR, van Adrichem M, Prakasa AD,
331 Lozano-Torres JL, et al. Co-expression of the protease furin in *Nicotiana benthamiana*
332 leads to efficient processing of latent transforming growth factor-1 into a biologically
333 active protein. *Plant Biotechnology Journal.* 2016;14(8):1695-704. doi:
334 10.1111/pbi.12530. PubMed PMID: WOS:000379958600005.
- 335 18. Castilho A, Beihammer G, Pfeiffer C, Goritzner K, Montero-Morales L, Vavra U,
336 et al. An oligosaccharyltransferase from *Leishmania major* increases the N-glycan
337 occupancy on recombinant glycoproteins produced in *Nicotiana benthamiana*. *Plant*
338 *Biotechnology Journal.* 2018;16(10):1700-9. doi: 10.1111/pbi.12906. PubMed PMID:
339 WOS:000444229700002.
- 340 19. Gomord V, Fitchette AC, Menu-Bouaouiche L, Saint-Jore-Dupas C, Plasson C,
341 Michaud D, et al. Plant-specific glycosylation patterns in the context of therapeutic protein
342 production. *Plant Biotechnology Journal.* 2010;8(5):564-87. doi: 10.1111/j.1467-
343 7652.2009.00497.x. PubMed PMID: WOS:000277527200003.
- 344 20. Margolin E, Oh YJ, Verbeek M, Naude J, Ponndorf D, Meshcheriakova YA, et al.
345 Co-expression of human calreticulin significantly improves the production of HIV gp140
346 and other viral glycoproteins in plants. *Plant Biotechnology Journal.* 2020;18(10):2109-17.
347 doi: 10.1111/pbi.13369. PubMed PMID: WOS:000563104900001.
- 348 21. Xu J, Zhang N. On the way to commercializing plant cell culture platform for
349 biopharmaceuticals: present status and prospect. *Pharm Bioprocess.* 2014;2(6):499-518.
350 Epub 2015/01/27. doi: 10.4155/pbp.14.32. PubMed PMID: 25621170; PubMed Central
351 PMCID: PMC4303569.
- 352 22. Plasson C, Michel R, Lienard D, Saint-Jore-Dupas C, Sourrouille C, de March
353 GG, et al. Production of recombinant proteins in suspension-cultured plant cells. *Methods*
354 *Mol Biol.* 2009;483:145-61. Epub 2009/02/03. doi: 10.1007/978-1-59745-407-0_9.
355 PubMed PMID: 19183898.
- 356 23. He X, Pierce O, Haselhorst T, von Itzstein M, Kolarich D, Packer NH, et al.
357 Characterization and downstream mannose phosphorylation of human recombinant alpha-
358 L-iduronidase produced in *Arabidopsis* complex glycan-deficient (cgl) seeds. *Plant*
359 *Biotechnol J.* 2013;11(9):1034-43. Epub 2013/08/01. doi: 10.1111/pbi.12096. PubMed
360 PMID: 23898885; PubMed Central PMCID: PMC4030584.
- 361 24. He X, Haselhorst T, von Itzstein M, Kolarich D, Packer NH, Gloster TM, et al.
362 Production of alpha-L-iduronidase in maize for the potential treatment of a human

- 363 lysosomal storage disease. *Nat Commun.* 2012;3:1062. Epub 2012/09/20. doi:
364 10.1038/ncomms2070. PubMed PMID: 22990858.
- 365 25. Ketcham CM, Kornfeld S. Characterization of UDP-N-
366 acetylglucosamine:glycoprotein N-acetylglucosamine-1-phosphotransferase from
367 *Acanthamoeba castellanii*. *J Biol Chem.* 1992;267(16):11654-9. Epub 1992/06/05.
368 PubMed PMID: 1317874.
- 369 26. Couso R, Lang L, Roberts RM, Kornfeld S. Phosphorylation of the
370 oligosaccharide of uteroferrin by UDP-GlcNAc:glycoprotein N-acetylglucosamine-1-
371 phosphotransferases from rat liver, *Acanthamoeba castellanii*, and *Dictyostelium*
372 *discoideum* requires alpha 1,2-linked mannose residues. *J Biol Chem.* 1986;261(14):6326-
373 31. Epub 1986/05/15. PubMed PMID: 2939075.
- 374 27. Jung JW, Huy NX, Kim HB, Kim NS, Van Giap D, Yang MS. Production of
375 recombinant human acid alpha-glucosidase with high-mannose glycans in *gnt1* rice for the
376 treatment of Pompe disease. *J Biotechnol.* 2017;249:42-50. Epub 2017/04/02. doi:
377 10.1016/j.jbiotec.2017.03.033. PubMed PMID: 28363873.
- 378 28. Jung JW, Kim NS, Jang SH, Shin YJ, Yang MS. Production and characterization
379 of recombinant human acid alpha-glucosidase in transgenic rice cell suspension culture. *J*
380 *Biotechnol.* 2016;226:44-53. Epub 2016/04/07. doi: 10.1016/j.jbiotec.2016.03.031.
381 PubMed PMID: 27050503.
- 382 29. Varki A. *Essentials of glycobiology*. Third edition. ed. Cold Spring Harbor, New
383 York: Cold Spring Harbor Laboratory Press; 2017. xxix, 823 pages p.
- 384 30. Liebming E, Huttner S, Vavra U, Fischl R, Schoberer J, Grass J, et al. Class I
385 alpha-mannosidases are required for N-glycan processing and root development in
386 *Arabidopsis thaliana*. *Plant Cell.* 2009;21(12):3850-67. Epub 2009/12/22. doi:
387 10.1105/tpc.109.072363. PubMed PMID: 20023195; PubMed Central PMCID:
388 PMCPMC2814498.
- 389 31. Choi HY, Park H, Hong JK, Kim SD, Kwon JY, You S, et al. N-glycan
390 Remodeling Using Mannosidase Inhibitors to Increase High-mannose Glycans on Acid
391 alpha-Glucosidase in Transgenic Rice Cell Cultures. *Sci Rep.* 2018;8(1):16130. Epub
392 2018/11/02. doi: 10.1038/s41598-018-34438-z. PubMed PMID: 30382146; PubMed
393 Central PMCID: PMCPMC6208381.
- 394 32. Hoekema A, Hirsch PR, Hooykaas PJJ, Schilperoort RA. A Binary Plant Vector
395 Strategy Based on Separation of Vir-Region and T-Region of the *Agrobacterium*-
396 *Tumefaciens* Ti-Plasmid. *Nature.* 1983;303(5913):179-80. doi: DOI 10.1038/303179a0.
397 PubMed PMID: WOS:A1983QP69700072.
- 398 33. Wilson IB, Harthill JE, Mullin NP, Ashford DA, Altmann F. Core alpha1,3-
399 fucose is a key part of the epitope recognized by antibodies reacting against plant N-linked
400 oligosaccharides and is present in a wide variety of plant extracts. *Glycobiology.*
401 1998;8(7):651-61. Epub 1998/06/11. doi: 10.1093/glycob/8.7.651. PubMed PMID:
402 9621106.
- 403 34. Oltmanns A, Hoepfner L, Scholz M, Zinzus K, Schulze S, Hippler M. Novel
404 Insights Into N-Glycan Fucosylation and Core Xylosylation in *C. reinhardtii*. *Front Plant*
405 *Sci.* 2020;10. doi: ARTN 1686
406 10.3389/fpls.2019.01686. PubMed PMID: WOS:000510647400001.
- 407 35. Paschinger K, Rendic D, Lochnit G, Jantsch V, Wilson IB. Molecular basis of
408 anti-horseradish peroxidase staining in *Caenorhabditis elegans*. *J Biol Chem.*
409 2004;279(48):49588-98. Epub 2004/09/15. doi: 10.1074/jbc.M408978200. PubMed
410 PMID: 15364955.

- 411 36. Faye L, Gomord V, Fitchette-Laine AC, Chrispeels MJ. Affinity purification of
412 antibodies specific for Asn-linked glycans containing alpha 1-->3 fucose or beta 1-->2
413 xylose. *Anal Biochem.* 1993;209(1):104-8. Epub 1993/02/15. doi:
414 10.1006/abio.1993.1088. PubMed PMID: 7682035.
- 415 37. Horsley D, Coleman J, Evans D, Crooks K, Peart J, Satiatjeunemaitre B, et al. A
416 Monoclonal-Antibody, Jim-84, Recognizes the Golgi-Apparatus and Plasma-Membrane in
417 Plant-Cells. *J Exp Bot.* 1993;44:223-9. PubMed PMID: WOS:A1993KH51000005.
- 418 38. Packer NH, Lawson MA, Jardine DR, Redmond JW. A general approach to
419 desalting oligosaccharides released from glycoproteins. *Glycoconjugate J.*
420 1998;15(8):737-47. doi: Doi 10.1023/A:1006983125913. PubMed PMID:
421 WOS:000077486800002.
- 422 39. Guile GR, Rudd PM, Wing DR, Prime SB, Dwek RA. A rapid high-resolution
423 high-performance liquid chromatographic method for separating glycan mixtures and
424 analyzing oligosaccharide profiles. *Anal Biochem.* 1996;240(2):210-26. doi: DOI
425 10.1006/abio.1996.0351. PubMed PMID: WOS:A1996VJ49600007.
- 426 40. Shin YJ, Chong YJ, Yang MS, Kwon TH. Production of recombinant human
427 granulocyte macrophage-colony stimulating factor in rice cell suspension culture with a
428 human-like N-glycan structure. *Plant Biotechnol J.* 2011;9(9):1109-19. Epub 2011/08/02.
429 doi: 10.1111/j.1467-7652.2011.00636.x. PubMed PMID: 21801300.
- 430 41. Pfenninger A, Karas M, Finke B, Stahl B, Sawatzki G. Matrix optimization for
431 matrix-assisted laser desorption/ionization mass spectrometry of oligosaccharides from
432 human milk. *J Mass Spectrom.* 1999;34(2):98-104. Epub 1999/03/27. doi:
433 10.1002/(SICI)1096-9888(199902)34:2<98::AID-JMS767>3.0.CO;2-N. PubMed PMID:
434 10093211.
- 435 42. Gil GC, Kim YG, Kim BG. A relative and absolute quantification of neutral N-
436 linked oligosaccharides using modification with carboxymethyl trimethylammonium
437 hydrazide and matrix-assisted laser desorption/ionization time-of-flight mass
438 spectrometry. *Anal Biochem.* 2008;379(1):45-59. doi: 10.1016/j.ab.2008.04.039. PubMed
439 PMID: WOS:000257199700008.
- 440 43. Aleksieva P, Tchobanov B, Nacheva L. High-Yield Production of Alpha-
441 Galactosidase Excreted from *Penicillium Chrysogenum* and *Aspergillus Niger*. *Biotechnol*
442 *Biotec Eq.* 2010;24(1):1620-3. doi: 10.2478/V10133-010-0015-5. PubMed PMID:
443 WOS:000276230500015.
- 444 44. Fanata WI, Lee KH, Son BH, Yoo JY, Harmoko R, Ko KS, et al. N-glycan
445 maturation is crucial for cytokinin-mediated development and cellulose synthesis in *Oryza*
446 *sativa*. *Plant J.* 2013;73(6):966-79. Epub 2012/12/04. doi: 10.1111/tpj.12087. PubMed
447 PMID: 23199012.
- 448 45. Varki A, Kornfeld S. Structural studies of phosphorylated high mannose-type
449 oligosaccharides. *J Biol Chem.* 1980;255(22):10847-58. Epub 1980/11/25. PubMed
450 PMID: 7430158.
- 451

452 **Figure Legends**

453 **Figure 1.** Characterization of $\Delta\alpha$ -*manI* mutant rice. (A) Scheme of genotyping PCR. Depends on
454 genome sequence of rice (Accession number. AP014960.1) and information from mutant rice
455 library, genotyping PCR primers were designed. Numbers in the figure mean position on rice
456 chromosome 4 (e.g 30621614-30621633 for Left primer) (B) Agarose gel images of genotyping
457 PCR. Genomic DNA was extracted from putative $\Delta\alpha$ -*manI* T-DNA insertional mutants and used
458 for PCR. Lane M, 1kbp plus 100 DNA ladder (Elpis); Lane WT, wild type rice; Lane #1, putative
459 homozygote; Lane #2, putative Heterozygote. (C) SDS-PAGE and Western blot analysis using
460 antibodies against to plant specific N-glycans. Protein was extracted from calli and separated by
461 SDS-PAGE(left upper), and then transblotted to nitrocellulose membrane to predict if plant
462 specific N-glycans such as α 1,3-Fucose(right upper), β 1,2-xylose (left lower) and Lewis a epitopes
463 (right lower). Lane M, Pre-stained protein ladder; Lane gntI, gntI mutant rice callus extracts; Lane
464 WT, wild-type rice callus extracts; Lane 1, Callus extracts from #1 line in fig.1B.

465

466 **Figure 2.** Expression of rhGAA in $\Delta\alpha$ -*manI* mutant rice. (A) Rice expression vectors construction.
467 Rice expression vectors for the human acid α -glucosidase (hGAA) gene (pMYD85), hGAA with
468 six histidine residues (pMYD532), or hGAA with FLAG-tag on N-terminus with the signal peptide
469 of the rice α -amylase 3D gene and its own pro-peptide, located between the rice α -amylase 3D
470 promoter (Ramy3D-p) and the 3' untranslated region (3' UTR). LB, T-DNA right border; 35S-p,
471 CaMV 35S promoter; Bar, bialaphos resistance gene; 35S polyA, terminator of 35S gene; RB, T-
472 DNA right border; EK, Enterokinase cleavage sequence between purification tags and hGAA. (B)
473 Agarose gel images of genomic DNA PCR. Lane M, 1kbp plus 100 DNA ladder (Elpis); PC,
474 Plasmid DNA; NC, genomic DNA PCR product of wild type rice; Lane numbered, genomic DNA
475 PCR products of putative transgenic calli. (C) Rice cell suspension culture media 9 days after
476 induction (dai). SDS-PAGE (upper) and Western blot using rat anti-GAA antiserum (lower). Lane
477 M, Pre-stained protein ladder; Lane PC, CHO cell derived rhGAA 500ng; Lane NC, wildtype rice

478 culture media under sugar starvation; Lane numbered, putative transgenic rice culture media under
479 sugar starvation.

480

481 **Figure 3.** Purification of recombinant human acid α -glucosidase (rhGAA) from rice cell
482 suspension culture. SDS-PAGE and Western blot using anti-GAA antibody of purified rhGAA by
483 affinity chromatography using N-terminus histidine tag (A) or FLAG tag (B). Lane M, Pre-stained
484 protein ladder; Lane PC, CHO cell derived rhGAA 500ng; Lane NC, $\Delta\alpha$ -*manI* mutant rice cultured
485 media under sugar starvation; Lane C, crude cultured media under sugar starvation; FT, Flow
486 through from the affinity column; Lane W, Wash from the affinity column; Lane E, eluted
487 fractions.

488

489 **Figure 4.** Matrix-assisted laser desorption ionization time-of-flight/time-of-flight
490 (MALDITOF)/mass spectra of 2-aminopyridine (PA)-N-glycans released from extra cellular
491 glycoproteins. Peaks from each sample were characterized in the positive reflector ion mode, and
492 detected ions were assigned to Na-adducts ($M+Na^+$) of the PA-N-glycans. Glycoproteins were
493 collected from the culture media from wild-type rice (A), $\Delta\alpha$ -*manI* mutant rice (B), and purified
494 recombinant $\Delta\alpha$ -*manI*-GAA (C), respectively.

495

496 **Table 1. Comparison of N-glycan patterns among total secreted glycoproteins from**
 497 **wild type and $\Delta\alpha$ -*manI* mutant rice and purified $\Delta\alpha$ -*manI*-GAA.**

^a Peak	Mass	Type of glycan	[†] Relative abundance (%)		
			Extracellular glycoprotein		
			^b WT	^b $\Delta\alpha$ - <i>manI</i>	^c $\Delta\alpha$ - <i>manI</i> -GAA
a	1143	MMX-PA	0.7		
b	1289	MMXF3-PA	13.3	3.9	
c	1335	Man5-PA		2	1.6
d	1346	GnMX-PA	1.3		
e	1492	GnMXF3-PA	18.9	1.8	
f	1497	Man6-PA		6.8	5.4
g	1508	AMX-PA	0.9		
h	1549	GnGnX-PA	0.8		
i	1654	(FA)MX-PA	1.8		
j	1659	Man7-PA		47.4	22.5
k	1695	GnGnXF3-PA	28.6	2.8	6.7
l	1711	AGnX-PA	1.1		
m	1799	(FA)MXF3-PA	2.4	3.1	
n	1821	Man8-PA		32.2	63.8
o	1857	(FA)GnX-PA	AGnXF3-PA	5.6	
p	2003	(FA)GnXF3-PA		16	
q	2019	(FA)AX-PA	AAXF3-PA	0.6	
r	2165	(FA)(FA)X-PA		0.7	
s	2310	(FA)(FA)XF3-PA		7.3	
Total			100.0	100.0	100.0

498

499 [†] Numbers are the sum of the relative abundances of a specific N-glycan, and MALDI
 500 intensities < 1% were omitted.

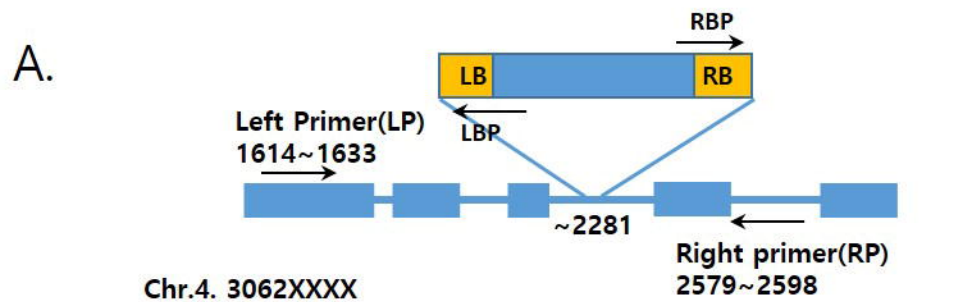
501 ^a peak: correspond to Fig. 4.

502 ^b Total extracellular glycoproteins derived from wild-type and $\Delta\alpha$ -*manI* mutant rice cell
 503 lines grown in N6 medium with sugar.

504 ^c Recombinant hGAA were induced in N6 medium without sugar.

505

Figure 1.



B.

	LP&RP		LP&LBP		RBP&RP	
	Expected Size : 985bp		Expected Size : ~900bp		Expected Size : ~600bp	
	M	WT #1 #2	M	WT #1 #2	M	WT #1 #2

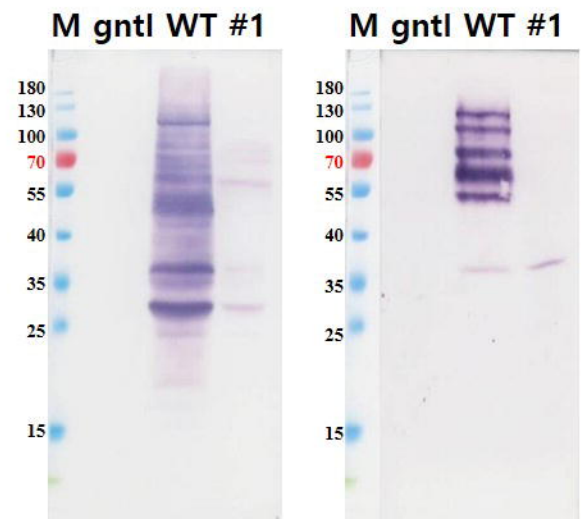
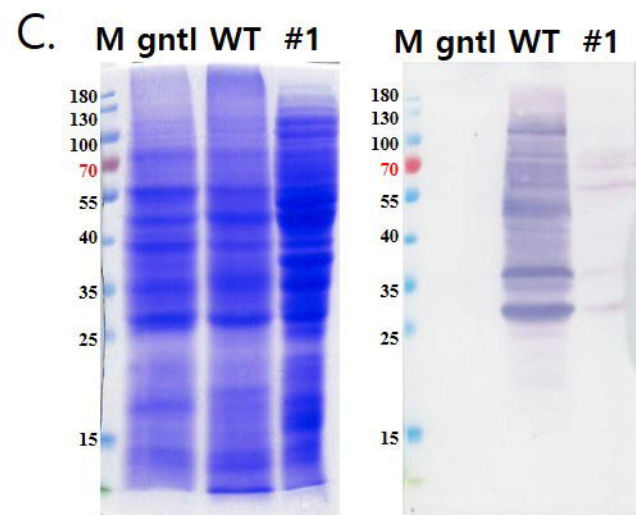
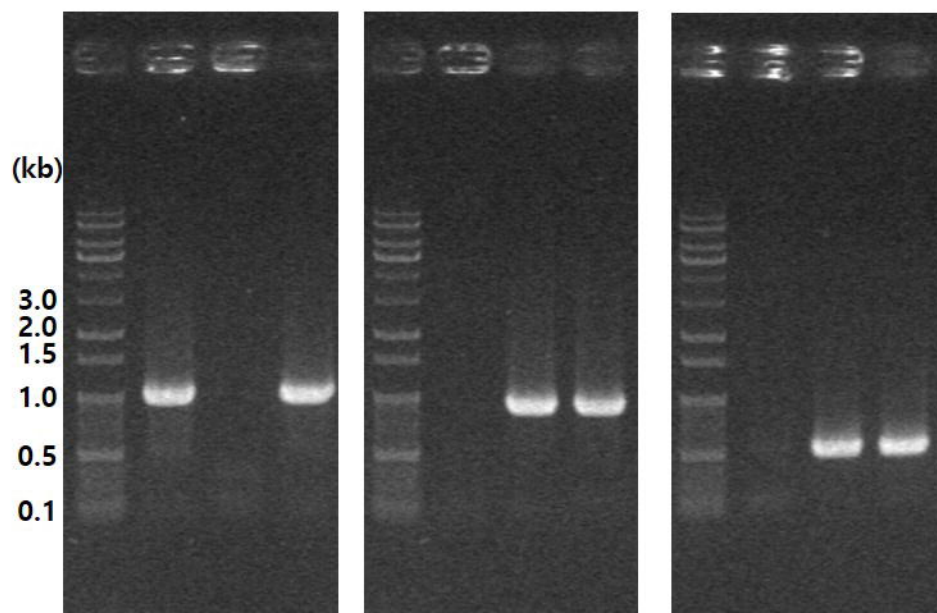


Figure 2.

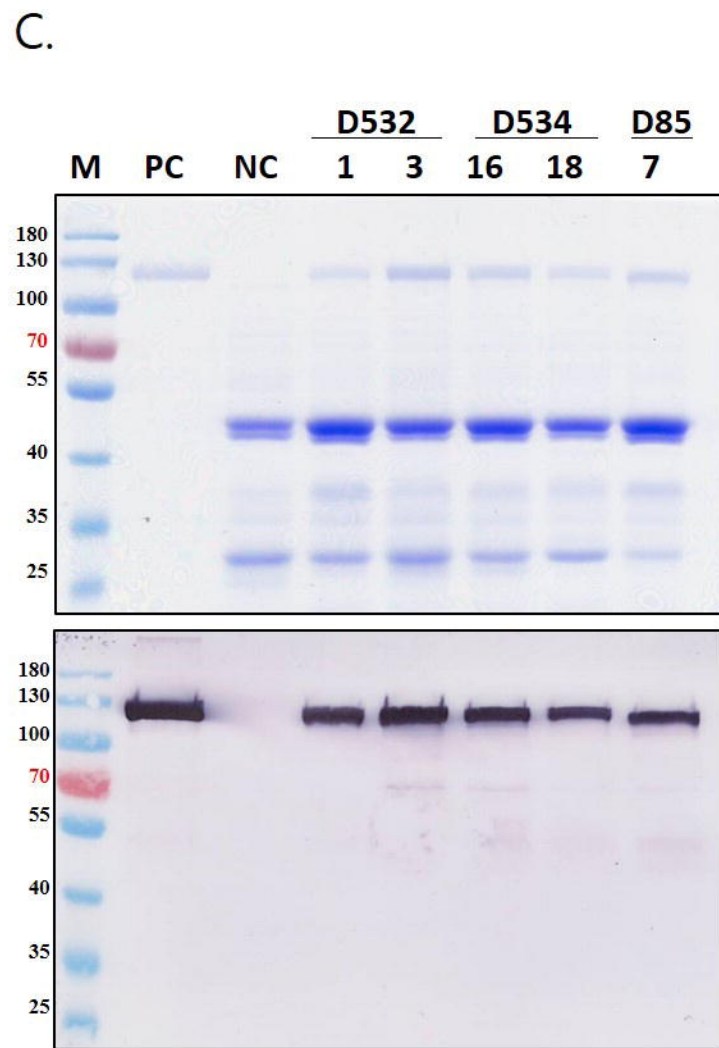
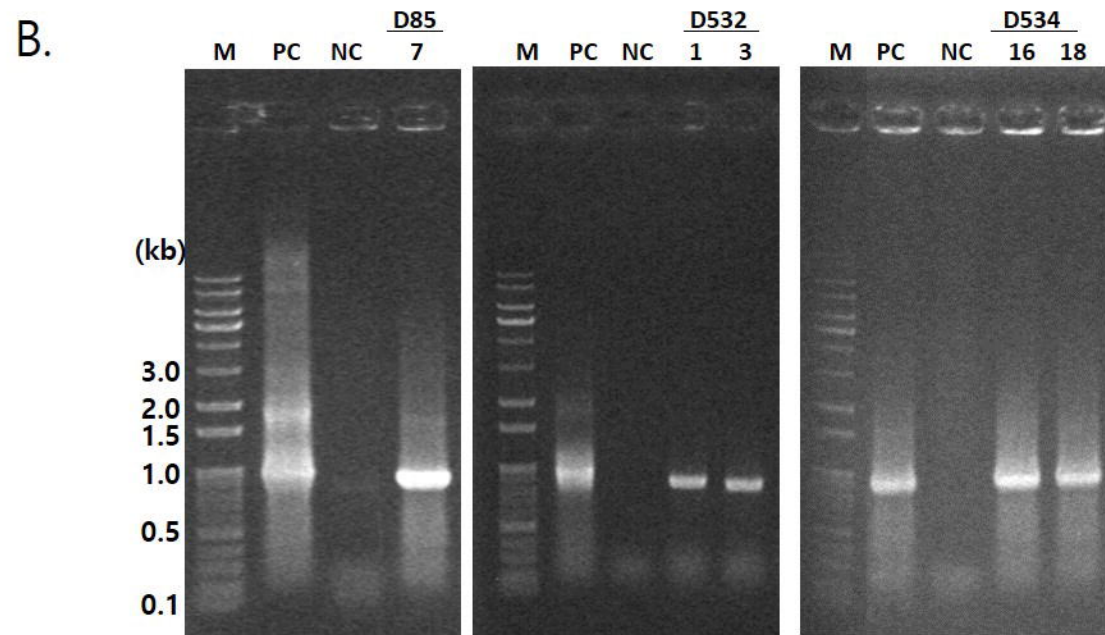
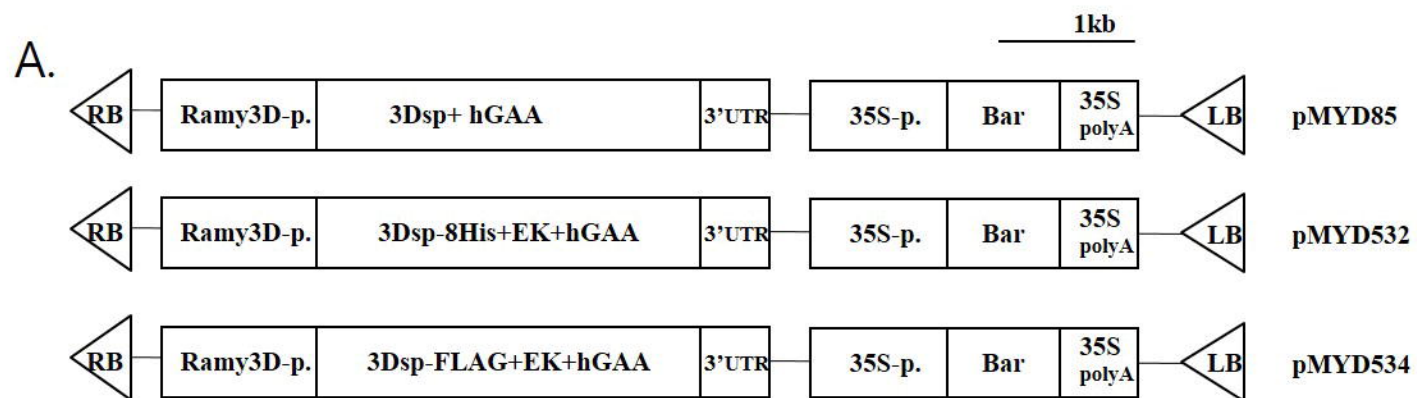


Figure 3.

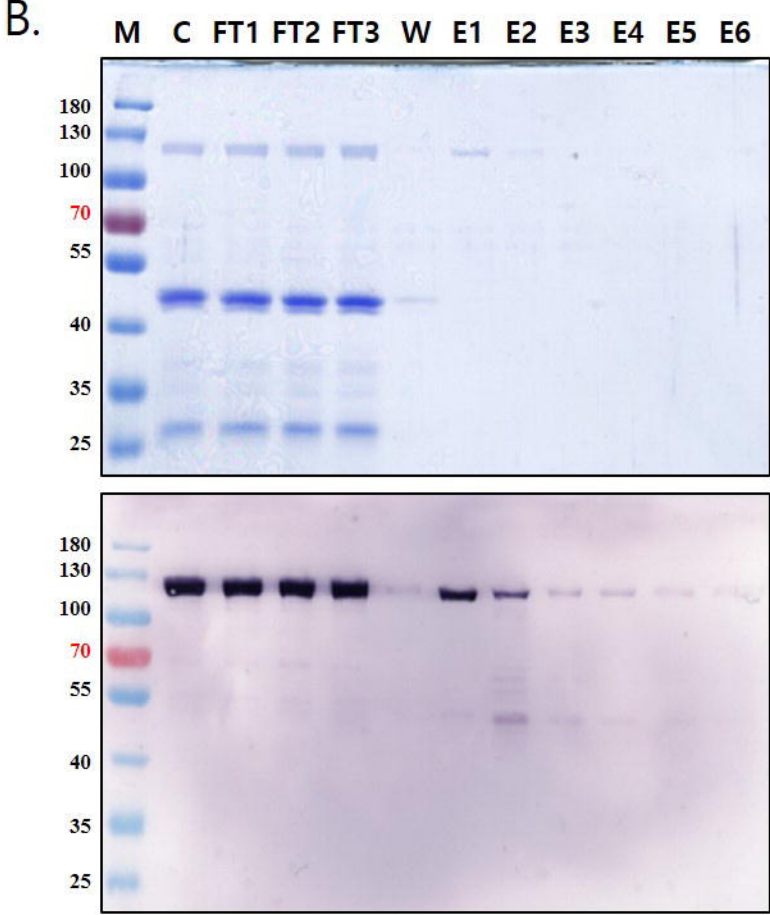
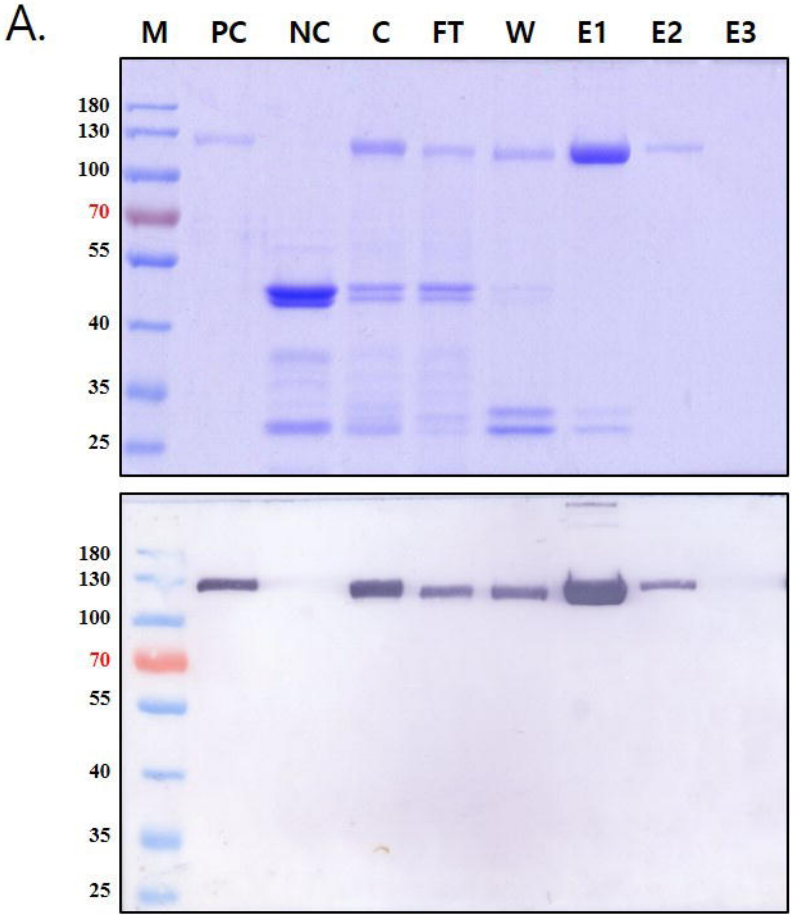


Figure. 4

A.

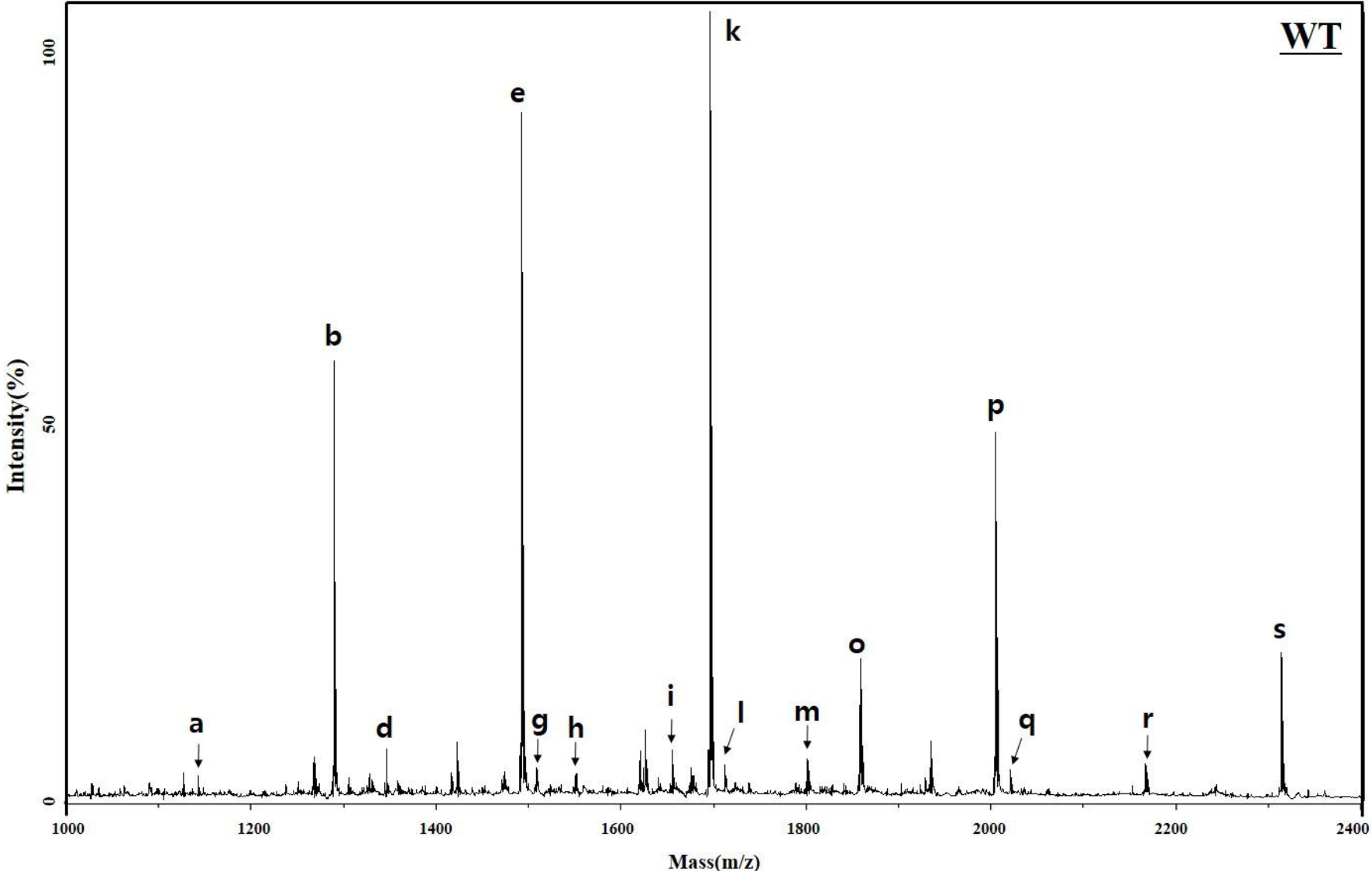


Figure. 4

B.

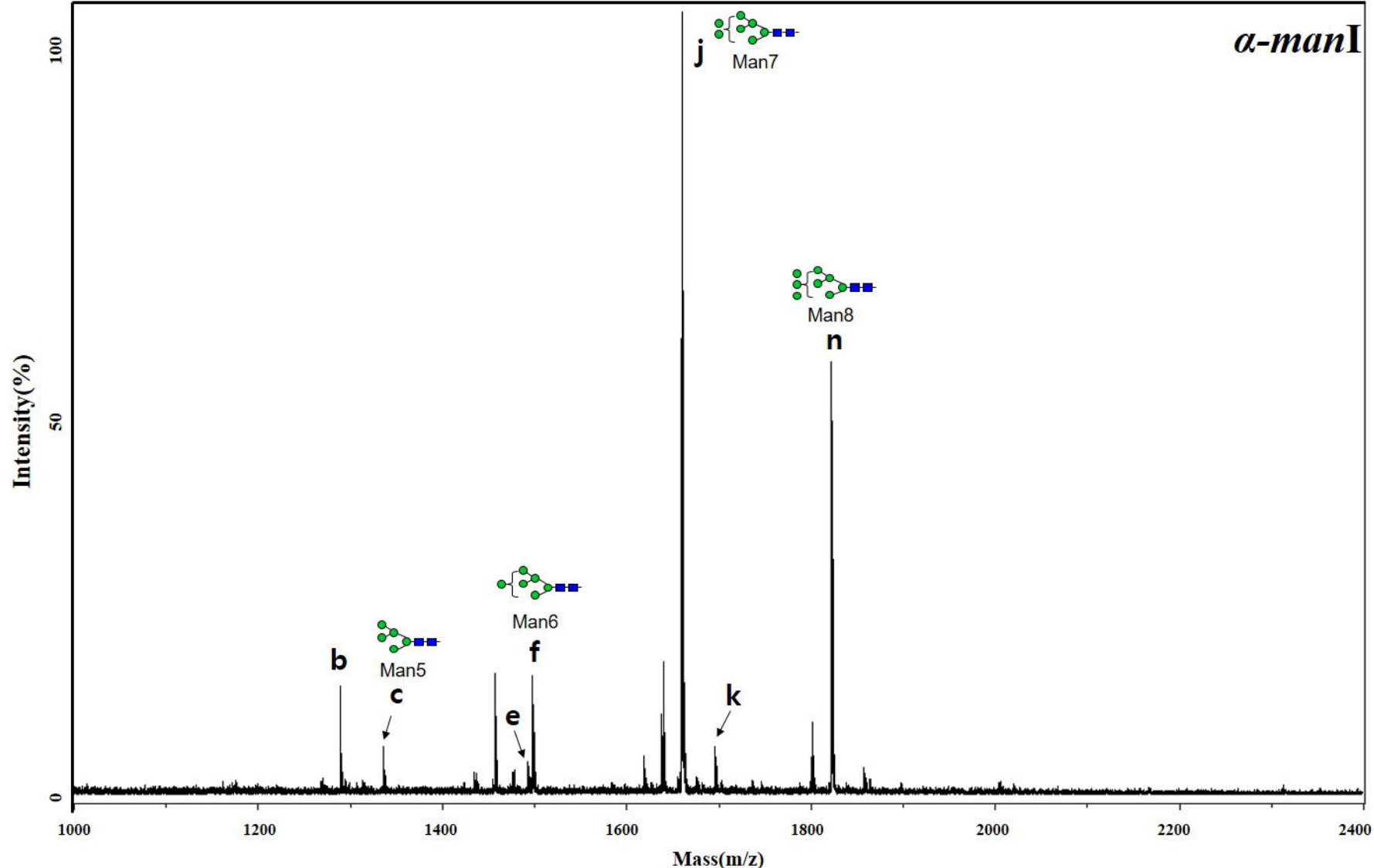


Figure. 4

C.

